

# BETHANY ELC NEWSLETTER



13TH OF JUNE 2023  
TERM 2 WEEK 7



Welcome to our Term 2, Week 7 Newsletter. Only a few weeks away until this term ends. How fast is that! We hope that everyone is keeping warm and safe as Winter is approaching.

There was so much learning and fun over the past few weeks as the children have done many hands-on experiences including colour mixing, science (making a volcano) and sensory/smell (with different types of herbs), music exploration and much more.

Over the last fortnight, we have introduced the term "Our Responsibility" in the ELC. Children have learnt and assigned jobs such as helping to unloading their lunch boxes before lunchtime, being a helper to ring the tambourine/bell to get ready for mat/lunch time, looking after and caring for our stick insect friends (Sticky and Grassy) and helping to collect the rubbish around our ELC and school grounds. It is so beautiful to see our children's determination, enthusiasm and willingness to help!

A friendly reminder for next week (Week 8), we will be having our first ELC excursion for this year. This is an exciting time for children to learning some new things and skills as it will take place outside the ELC site and under the supervision of teachers, educators and our parent helpers.

We are so looking forward to the exciting and fun time as we enter another week full of learning! Have a wonderful week ahead.

**God bless,  
Viva Phetsikhio - ELC Co-Educator**

# OTHER INFORMATION

## Communication:

Each child has their own pocket in the foyer where you will find notices. Please remember to check this each day your child is in ELC, please also check Storypark for regular updates of our daily activities, and your emails for ongoing communication.

We understand you may need to contact the ELC other times throughout the day which you are welcome to do via email: [elc@bethany.sa.edu.au](mailto:elc@bethany.sa.edu.au), or phone: 8283 0000.



- 25. Catch some bugs and then release them
- 26. Search for shells at the beach
- 27. Invent your own obstacle course using rocks and sticks

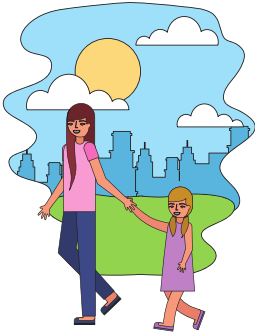


## Important Dates in Term 2:

Excursion Come & Play	Week 8 Mon (19/6) - Thu (22/6)
NAIDOC Week	Week 10 (2/7-9/7)
Term 2 Holidays (ELC Open)	Mon (10/7) - Fri (21/7)
ELC Closed (Holidays)	Holiday Week 1 Fri (14/7)



# OUR LEARNING



Our first Excursion is happening next week! We will learn together this week how we can stay safe.

**What are you excited to see on our local walk Excursion?**

We will also explore musical instruments here at the ELC and while on our Excursion walk.

**Do you have a favourite musical instrument to play with?**



We are learning about serving others as we read about The Good Samaritan and how Jesus served and loved others.

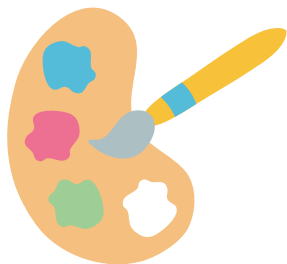
**How can you serve someone you know this week?**



# OUR LEARNING

We are learning how to make colours by mixing them together!

**Can you share with someone in your family what colours you now know how to make?**



We are learning to sort and match to help us find what is the same and what is different in some objects!

**Can you show someone in your family what is the same and what is the different from these pictures?**

We will be starting to identify words that begin with the sounds 'i' and 'r'!

**Can you ask someone in your family to help you think of other words starting with 'i' or 'r'?**

